

2024/2025

REVELSTOKE SELECT

presents the

GHOST PEAK CHALET

Revelstoke, British Columbia





Introducing
Ghost Peak Chalet

Welcome to Ghost Peak Chalet, where the majesty of the Selkirk Mountains finds its counterpart in luxury living.

Just as the iconic Ghost Peak commands attention with its soaring heights and breathtaking slopes, this 5,400 square foot retreat stands as a testament to unparalleled elegance amidst the rugged beauty of the Columbia range.

5 BEDROOMS
UP TO 12 GUESTS

Introducing
Ghost Peak Chalet

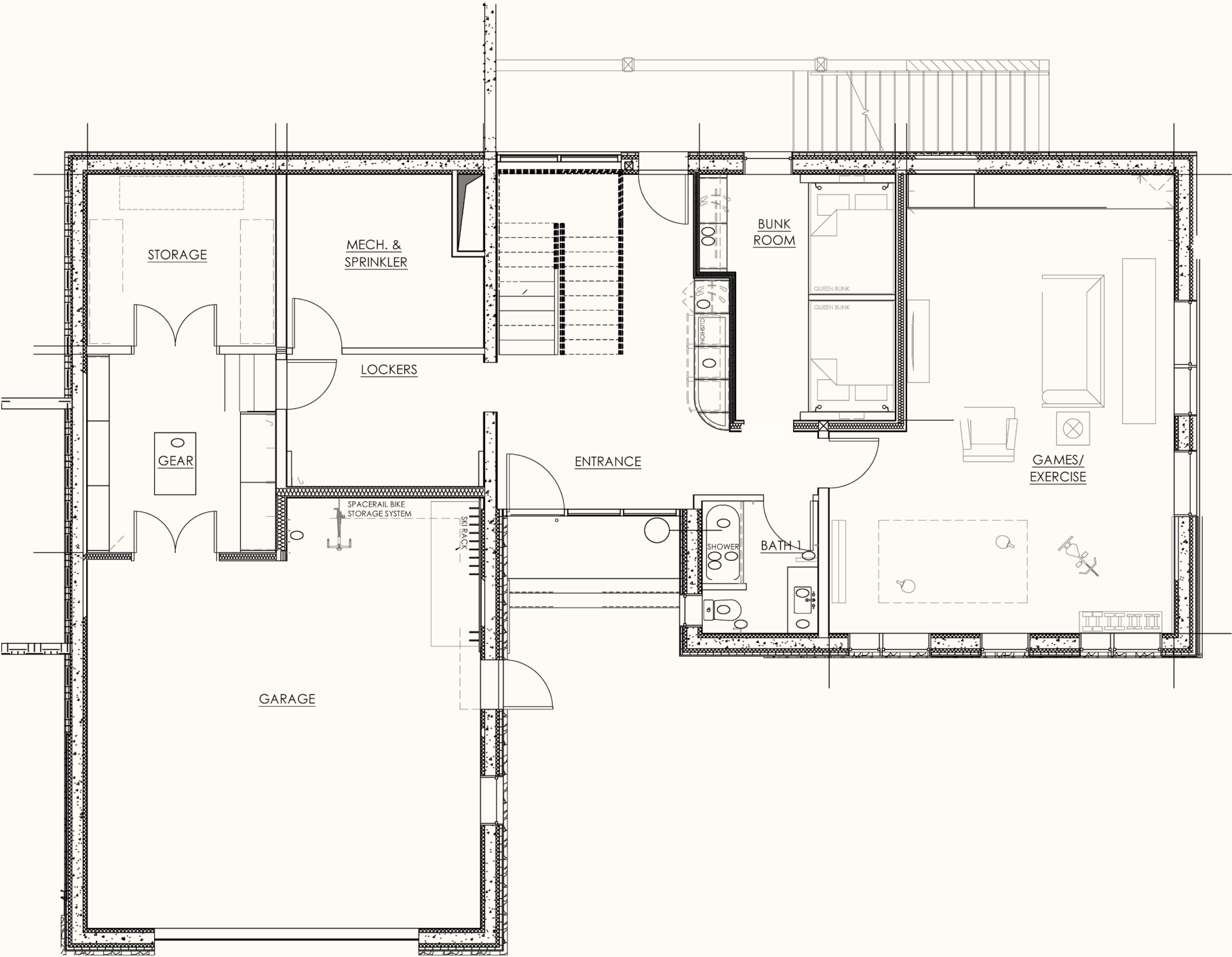
Nestled along the same ridge that cradles the illustrious peak, Ghost Peak Chalet beckons adventurers and seekers of serenity alike to indulge in the ultimate mountain getaway, while writing their own chapter of mountain magic.

Just steps from the slopes of Revelstoke Mountain Resort and the new Cabot Revelstoke 18-hole, championship golf course, Ghost Peak Chalet is conveniently located yet perfectly secluded.

Ski in and ski out access in the winter months and a short drive to Cabot's clubhouse, Lake Revelstoke or the shopping and dining options in downtown Revelstoke, Ghost Peak Chalet is ideal for families and friends or those simply seeking a beautifully designed and appointed home to quietly call their own when discovering Revelstoke, no matter what season.

5,400 SQ FT OF
LUXURY LIVING





floor plan /
Ground Level

- Grand Entrance with access to upper floors
- Two car garage with ample ski and bike storage
- 2 EV Charging Outlets
- Gear Room with boot dryers, seating, and gear storage
- Generous Games Room + Gym
 - *Shuffleboard + ping pong tables*
 - *Wet bar with bar fridge + ice maker*
 - *Spin bike and fitness equipment*
 - *Large screen Smart TV*
 - *Pull out double bed for overflow sleeping*
- Bunk Room with double queen-sized bunks
 - *Personalized reading lights*
- Full Bathroom with tub

SLEEPS 4
INDEPENDENTLY

Ground
Floor

Exceptionally designed, Ghost Peak Chalet’s ground level gear storage and locker rooms are a stunning addition to the home.

With ample storage for gear from every season, two high-powered boot drying walls and personal lockers, rest assured you’ll be dry, organized, and ready for another day of adventure.

Two Cyclone Wall Mount Boot Dryers
and Glove Dryers

Personalized lockers

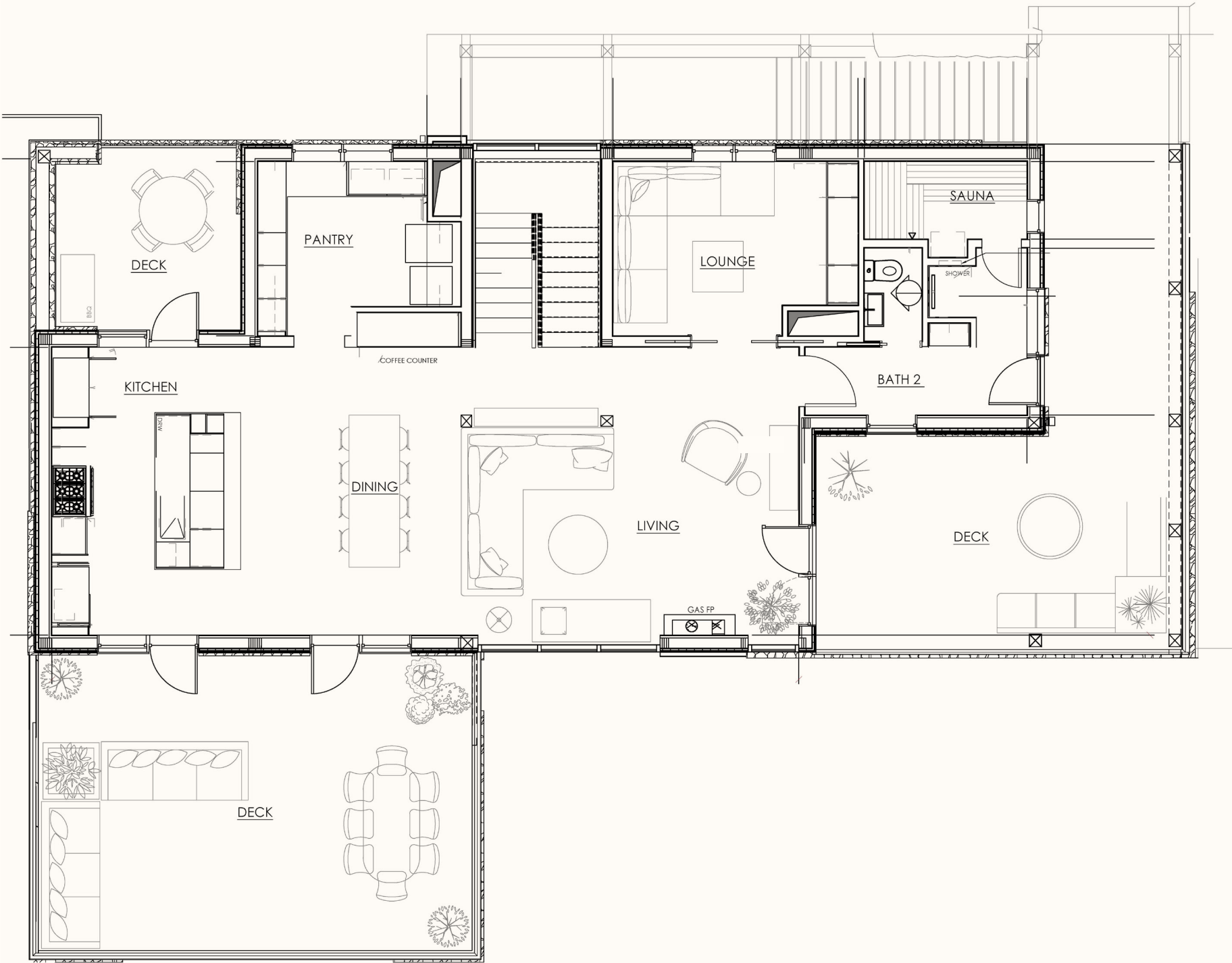
Custom millwork

Nonslip flooring + bench seating

Dedicated storage for gear, luggage,
and additional supplies

Ventilated with fresh air return
for optimal drying





floor plan /
Main Level

Spacious living room

With access to three independent, elevated decks

- West facing deck with lounge seating and outdoor dining*
- South facing covered deck with lounge seating + gas firepit*
- East facing deck, ideal for morning coffee amongst the pines*

Gourmet kitchen

- Ideal for part time or the most professional of chefs*
- 6-burner gas stove*
- Dedicated coffee bar*
- Oversized refrigerator*
- Seating for four at center island*

Full-sized Kitchen Pantry

Work space, storage, laundry, ice machine and bar/wine fridge

Private lounge with cozy couch + Smart TV

Cedar lined sauna with accompanying shower
+ bathroom

Main
Floor

Perfect for intimate or larger groups, Ghost Peak Chalet is ideal for hosting. Accommodating up to 12 guests, two dining areas set the stage for elegant meals. When the seasons turn from crisp winter temperatures to the warmth of the summer months, the chalet’s west facing dining deck is the most glorious.

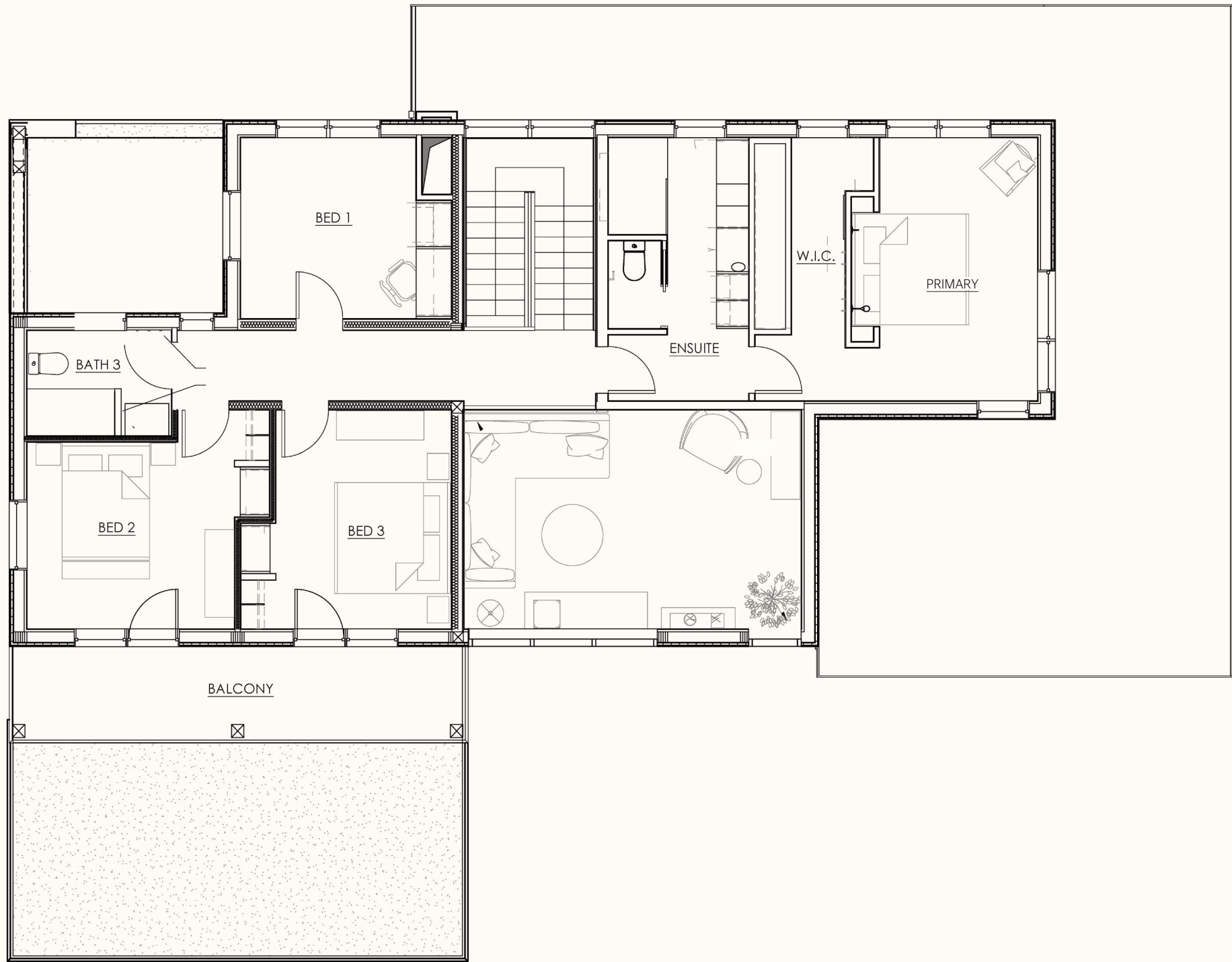
A fully equipped kitchen, complete with bar seating and a convenient coffee counter, is a culinary haven, perfectly designed for light meal prep or the services of a private chef. A walk-in pantry stands ready with a washer, dryer, bar fridge, and ice machine, enhancing convenience.

Vaulted living room ceilings
with soaring floor to ceiling windows

Expansive open living space
with spectacular Columbia River and Monashee views

Elegant gas fireplace
with two-storey rock surrounds





floor plan /
Upper Level

Three Bedrooms sleeping up to 6 guests
2 x Queen bedrooms
1 x King bedroom (with split twin bed option)

Full Bathroom + glass shower

Primary Suite
King Bedroom with grand ensuite and walk-in closet

Large window, maximizing southwest exposures

Overlooking the great room and outward to the Monashee Mountains

SLEEPS 8 GUESTS
5 INDEPENDENTLY

Upper
Floor

Nestled at the south end of the home, Ghost Peak Chalet's primary bedroom is a private, stand-alone retreat with the luxury of a large walk-in closet with custom-designed, built-in cabinetry, and a lavish ensuite bathroom adorned with a double vanity and glass surround shower.

Equally inviting, the additional upper floor bedrooms feature king and queen-sized beds accompanied by designated workspaces. From the west facing bedrooms, step outside onto the balcony to take in the mountain air and revel in the beauty of the surrounding Columbia Mountain peaks.

Primary Suite
King-sized bed with sitting area
Large walk-in closet
Full bathroom with double vanity, glass shower

Bedroom 1
Queen-sized bed with dedicated workspace

Bedroom 2
Queen-sized bed + west facing balcony

Bedroom 3
King-sized bed (split to 2 twin beds) + west facing balcony



Pricing
& Terms

SEASON	DATES	RATES (+16% TAX)*
LOW (SUMMER)	April 20th - December 8th, 2024	\$1,900 CAD
PRE/POST (SKI)	December 9th - December 20th, 2024 January 3rd - January 17th, 2025 March 21st - RMR closing date (April 2025)	\$2,250 CAD
REGULAR (SKI)	January 17th - March 21st, 2025	\$3,050 CAD
HIGH (SKI)	December 20th, 2024 - Jan 3, 2025 (Christmas) February 14th - 21st, 2025 (President's Week)	\$3,450 CAD

Minimum night stay: 3 nights

Pricing based on 10 guests
- *Departure cleaning will be quoted based on number of guests.*
Damage Deposit will be taken at time of check in (\$2,500CAD)





Pricing & Terms

TERMS

A 25% deposit is due to secure the booking.

If cancellation is less than 90 days prior to the rental period, deposit shall be forfeited to Owner as damages.

If cancellation is 89-60 days prior to rental period, 60% of the rental fee shall be non-refundable and forfeited to Owner as damages.

If cancellation is less than 60 days prior to the rental period, 100% of the rental fee shall be non-refundable, forfeited to Owner as damages.

Please reference the Vacation Rental Agreement for complete terms.

CHECK IN: 3PM
CHECK OUT: 10AM

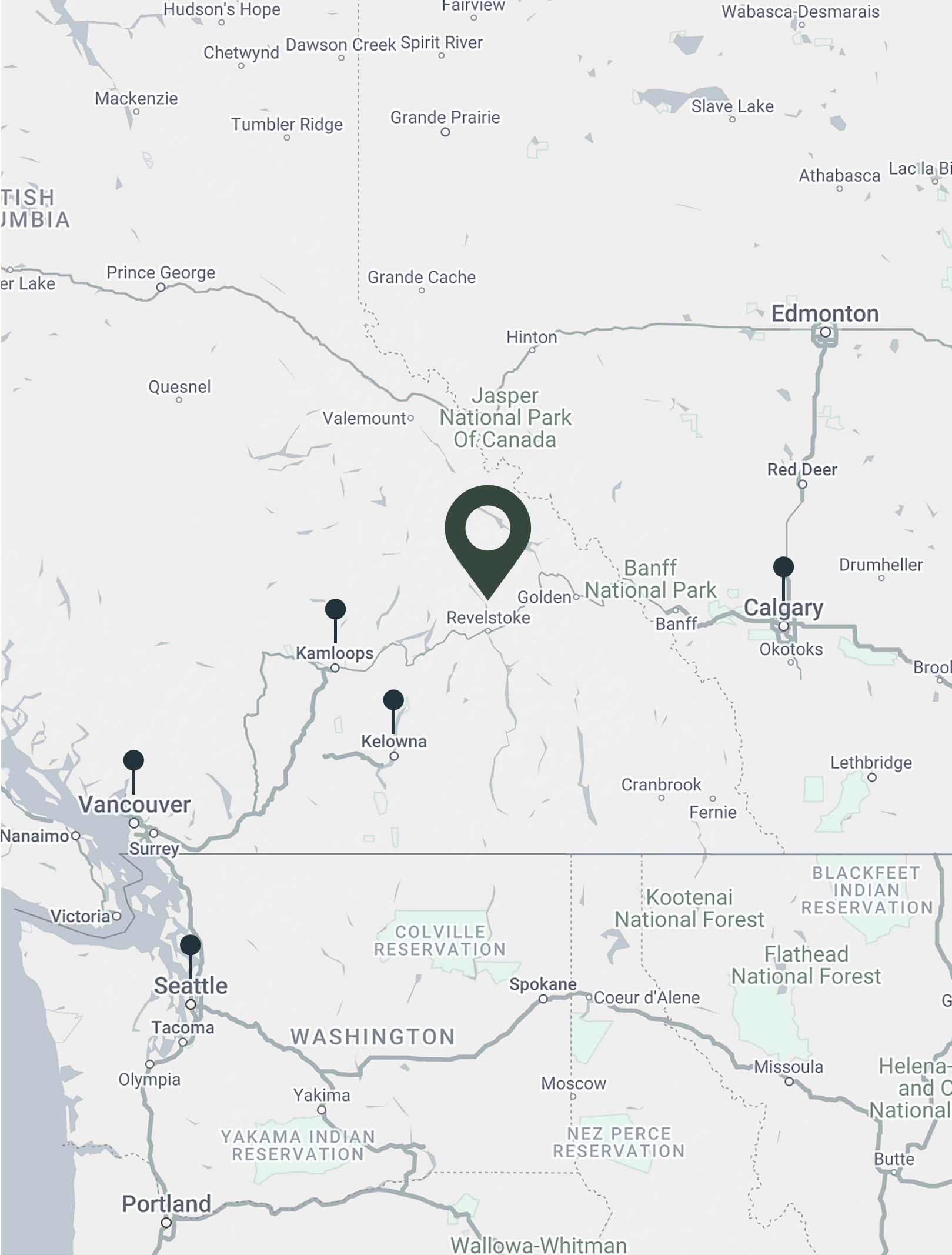
Getting to
Revelstoke, BC

There are several
options when traveling
to Revelstoke.

As you book your stay, our Operations Team
can assist with arrangements for shared
or private ground transportation or private
jet and heli transfers from the Calgary and
Kelowna airports.

Please Enquire

- Revelstoke, BC
- Airports



Curating Local Luxury for Discerning Adventurers

Discover the pinnacle
of mountain adventure
with Revelstoke Select
Vacation Properties.

As the local leader in bespoke luxury, Revelstoke Select curates an exclusive collection of luxury homes and all-inclusive chalets while harnessing unparalleled area knowledge and years of expertise to create bucket-list alpine experiences to surprise and delight the most discerning adventurers.

Consider the Revelstoke Select team as your personal concierge. We draw from decades of first-hand experience — and the breadth of knowledge garnered from our long-term, best-in-class tourism and hospitality partners — to tailor a luxury Revelstoke adventure befitting your style.





Revelstoke Select's signature experience
begins well before you
arrive in Revelstoke

Revelstoke Select is here to assist you with:

Transportation

Group and Private Ground Transportation
(Kelowna or Calgary / return).

Private Heli Transfers

(Kelowna or Calgary / return)

Private Charter Flights

(Kelowna or Calgary / return)

Heli Ski Bookings

Revelstoke Mountain Resort

Lift Tickets, Rentals, Instruction and Guiding

Embrace the ultimate in mountain luxury with in-chalet services

Revelstoke Select is here to
assist you with securing:

Private Chef Services
Bartending Services
Daily Housekeeping
In Chalet Massage Therapy
In Chalet Yoga
Nanny Services

Every member of the Revelstoke Select team lives and breathes Revelstoke Mountain Resort's (RMR) epic ski lifestyle. We're passionate skiers, snowboarders and adventurers lured to this region for the featherlight powder, breathtaking vertical and intangible grounded feeling that comes with exploring the pristine.

Showcasing Revelstoke and elevating your luxury adventure is our ultimate goal and absolute pleasure.

When every moment counts
Revelstoke Select makes them unforgettable





We look forward
to hosting you at the
chalet this season

*Revelstoke Select
Vacation Properties Inc.*

250 200 0066
info@revelstokeselect.com

Ghost Peak Chalet

20, 2465 Monashee Court
Revelstoke, British Columbia
V0E 2S3

PHOTO CREDITS: JAMES BUCKLE, TOM
POOLE, ROYCE SIHLIS & HYWEL WILLIAMS.

GHOST PEAK CHALET

Revelstoke, British Columbia

