

REVELSTOKE SELECT

presents

GHOST PEAK CHALET

Revelstoke, British Columbia

2025/2026
RATES & TERMS





Introducing Ghost Peak Chalet

Welcome to Ghost Peak Chalet, where the majesty of the Selkirk Mountains finds its counterpart in luxury living.

Just as the iconic Ghost Peak commands attention with its soaring heights and breathtaking slopes, this 5,400 square foot retreat stands as a testament to unparalleled elegance amidst the rugged beauty of the Columbia range.

5 BEDROOMS
UP TO 10 ADULTS |
UP TO 12 WITH CHILDREN UNDER 12 YEARS OF AGE

Introducing Ghost Peak Chalet

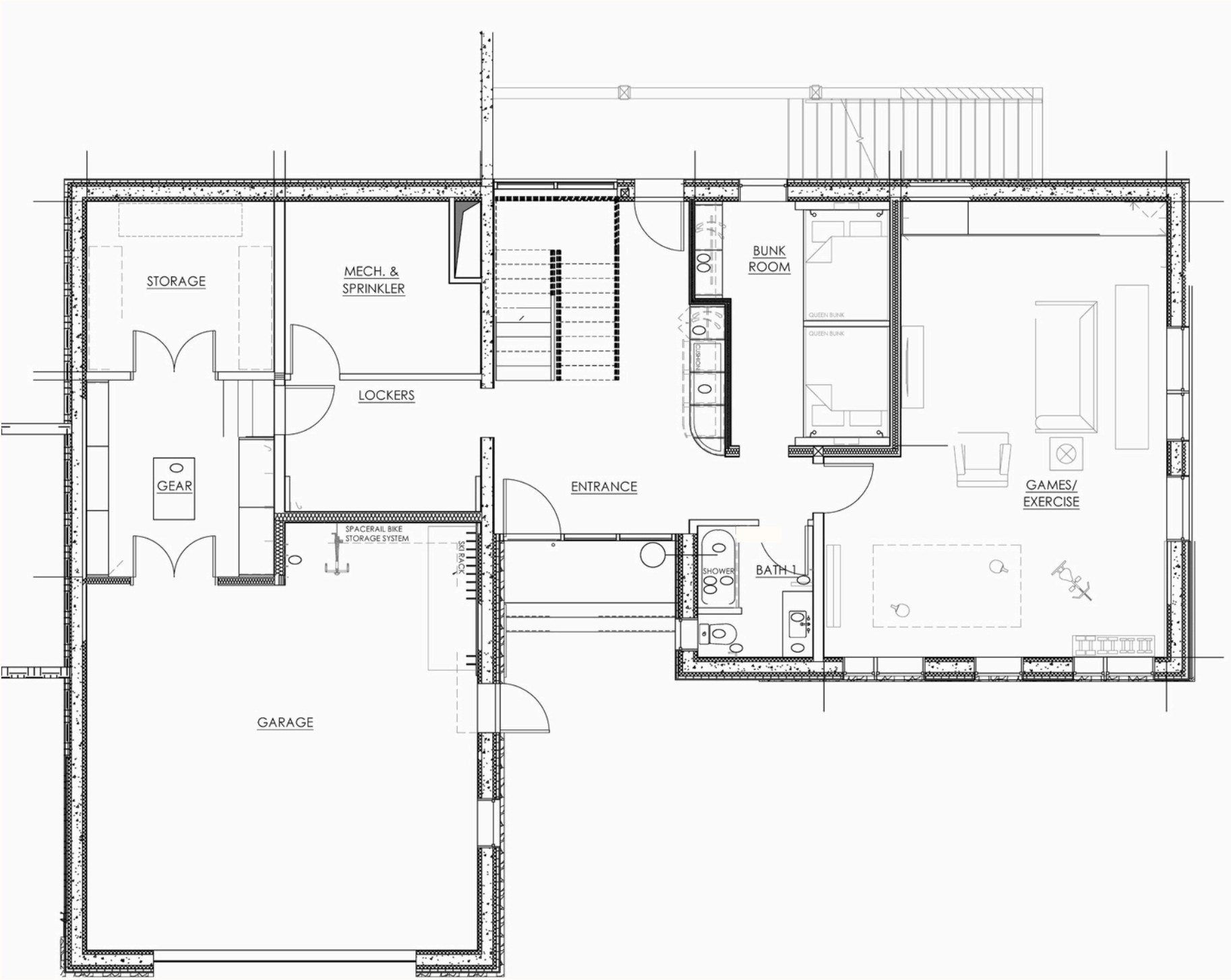
Nestled along the same ridge that cradles the illustrious peak, Ghost Peak Chalet beckons adventurers and seekers of serenity alike to indulge in the ultimate mountain getaway, while writing their own chapter of mountain magic.

Just steps from the slopes of Revelstoke Mountain Resort and the new Cabot Revelstoke 18-hole, championship golf course, Ghost Peak Chalet is conveniently located yet perfectly secluded.

Ski in and walk out access in the winter months and a short drive to Cabot's clubhouse, Lake Revelstoke or the shopping and dining options in downtown Revelstoke, Ghost Peak Chalet is ideal for families and friends or those simply seeking a beautifully designed and appointed home to quietly call their own when discovering Revelstoke, no matter what season.

5,400 SQ FT OF
LUXURY LIVING





floor plan / Ground Level

Grand entrance with access to upper floors
2-car garage with ample ski and bike storage
EV charging outlets
Gear Room with boot dryers, seating, and gear storage
Generous games room

Shuffleboard + Ping Pong Table
Wet bar with bar fridge + ice maker
Large screen Smart TV

Bunk Room with double queen-sized bunks (Sleeps 4)
Full Bathroom with tub

SLEEPS 4
INDEPENDENTLY

Ground
Level

Exceptionally designed, Ghost Peak Chalet’s ground level gear storage and locker rooms are a stunning addition to the home.

With ample storage for gear from every season, two high-powered boot drying walls and personal lockers, rest assured you’ll be dry, organized, and ready for another day of adventure.

- Two Cyclone wall-mount boot dryers
and glove dryers
- Personalized lockers
- Custom millwork
- Nonslip flooring + bench seating
- Dedicated storage for gear, luggage and additional supplies
- Ventilated with fresh air return
for optimal drying





floor plan / Main Level

Gourmet chef kitchen + pantry

Ideal for part time or the most professional of chefs.

6-burner gas stove.

Dedicated coffee bar.

Oversized refrigerator

Seating for four at center island.

West facing deck with lounge seating and outdoor dining.

South facing covered deck with lounge seating + gas fire pit.

East facing deck, ideal for morning coffee amongst the pines.

Trager smoker / BBQ

Pantry work space, storage, laundry, ice machine and bar/wine fridge

Private lounge with cozy couch + Smart TV

Sonos surround sound system

Gas fireplace

Floor to extended ceiling windows

Powder room

Cedar-lined Sauna with accompanying shower + bathroom

Main
Level

Perfect for intimate or larger groups, Ghost Peak Chalet is ideal for hosting.

Accommodating up to 10 guests, the open concet is spacious and welcoming.

When the seasons turn from crisp winter temperatures to the warmth of the summer months, the chalet’s west facing dining deck is the most glorious.

A fully equipped kitchen, complete with bar seating and a convenient coffee counter, is a culinary haven, perfectly designed for light meal prep or the services of a private chef. A walk-in pantry stands ready with a washer, dryer, bar fridge, and ice machine, enhancing convenience.

Vaulted living room ceilings
with soaring floor to ceiling windows

Expansive open living space
with spectacular Columbia River and Monashee views

Elegant gas fireplace
with two-storey rock surrounds





floor plan /
Upper Level

Four bedrooms sleeping up to 6 guests

*Primary king bedroom with walk-in closet
- grand ensuite with double vanity, shower and tub*

*2 x queen bedrooms
1x king bedroom (with split twin bed option)
- full shared bathroom + tub and shower*

- Luxury linens
- Personal robes
- Shower amenities (soaps, shampoos, conditioners)
- Hair dryers

SLEEPS 6 GUESTS
5 INDEPENDENTLY

Upper Level

Nestled at the south end of the home, Ghost Peak Chalet’s primary bedroom is a private, stand-alone retreat with the luxury of a large walk-in closet with custom-designed, built-in cabinetry, and a lavish ensuite bathroom with a double vanity and glass surround shower.

Equally inviting, the additional upper floor bedrooms feature king and queen-sized beds.

From the west facing bedrooms, step outside onto the balcony to take in the mountain air and revel in the beauty of the surrounding Columbia Mountain peaks.

Primary Suite
King-sized bed with sitting area.
Full bathroom with double vanity, glass shower
Large walk-in closet

Bedroom 1
Queen-sized bed with dedicated workspace

Bedroom 2
Queen-sized bed + west facing balcony

Bedroom 3
King-sized bed (split to 2 twin beds) + west facing balcony





Revelstoke Select's signature experience begins well before you arrive in Revelstoke

As the local leader in bespoke luxury, Consider the Revelstoke Select Team as your personal concierge. We draw from decades of first-hand experience and the breadth of knowledge garnered from our long-term, best-in-class tourism and hospitality partners to tailor a luxury Revelstoke adventure be-fitting your style.

We are here to help, start your planning now:

Transportation

Group and Private Ground Transportation
(Kelowna or Calgary / return).

Private Heli Transfers

(Kelowna or Calgary / return)

Private Charter Flights

(Kelowna or Calgary / return)

Heli Ski Bookings

Revelstoke Mountain Resort

Lift Tickets, Rentals, Instruction and Guiding

Let's Curate Your Perfect Stay!

Indulge in a Fully-Serviced Stay at Ghost Peak Chalet.

Enhance your stay with Revelstoke Select's fully serviced home experience.

Our serviced stay's include:

- Dedicated Lodge Manager
- Private Executive Chef crafting bespoke menus
- Wine consulting
- Breakfast, Après, Dinner, soft drinks and snacks
- Daily housekeeping & Laundering
- Professional Concierge Team to manage every detail

From gourmet breakfast to après-ski indulgences and exquisite dinners, every aspect of your stay is thoughtfully curated for effortless enjoyment.

With years of expertise in luxury hospitality, we ensure a seamless and refined experience.

For those seeking more, our Concierge Team can arrange heliskiing, VIP guiding, lift tickets, ski and touring equipment rentals, private yoga, in-chalet massage services, airport transfers, and more.

When every moment counts

Revelstoke Select makes them unforgettable



Pricing
& Terms

SEASON	DATES	RATES
		+ 16% TAX + DEPARTURE CLEAN (\$950 + 5% GST)
OFF SKI SEASON	RMR Closing 2025 (anticipated Apr 21st) to RMR Opening 2025 (anticipated Dec 5th)	\$1,900CAD
SKI SEASON (LOW)	RMR Opening 2025 - Thursday, Dec 18th 2025 Sunday, Mar 29th, 2026 - RMR Closing 2026 (anticipated Apr 20th)	\$2,250CAD
SKI SEASON (REGULAR)	Sunday, Jan 4th - Thursday, Feb 12th, 2026 Sunday, Feb 22nd - Saturday, March 28th, 2026	\$3,200CAD
SKI SEASON (HIGH)	Friday Dec 19th, 2025 - Saturday Jan 3rd, 2026 Friday Feb 13th - Saturday Feb 21st, 2026	\$3,450CAD

MINIMUM 5-NIGHT STAYS | 3-NIGHT STAYS (LOW SEASON)
MAXIMUM NUMBER OF GUESTS: 10 | UP TO 12 IF UNDER THE AGE OF 12
DAMAGE DEPOSIT WILL BE TAKEN AT TIME OF CHECK IN (\$2,500)





Pricing & Terms

Terms

A 25% deposit is due to secure the booking. If cancellation is less than 90 days prior to the rental period, the deposit shall be forfeited to the Owner as damages.

If cancellation is 89-60 days prior to rental period, 60% of the rental fee shall be non-refundable and forfeited to the Owner as damages.

If cancellation is less than 60 days prior to the rental period, 100% of the rental fee shall be non-refundable, forfeited to the Owner as damages.

Upon booking, please reference the Vacation Rental Agreement for complete terms.

CHECK IN: 3PM
CHECK OUT: 10AM

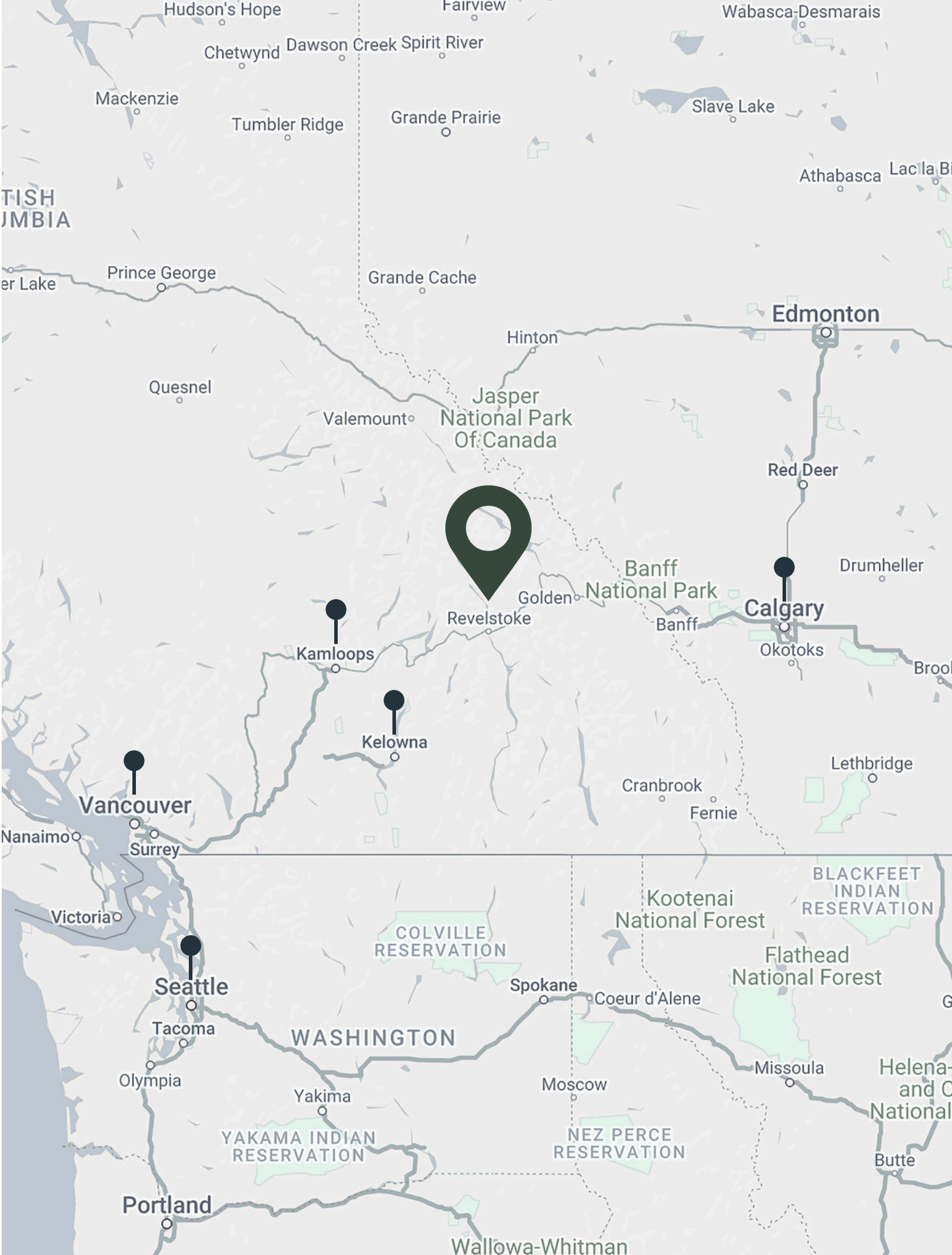
Getting to Revelstoke, BC

There are several options when traveling to Revelstoke.

As you book your stay, our Concierge Team can assist with arrangements for shared or private ground transportation or private jet and heli transfers from the Calgary and Kelowna airports.

Please Enquire

- Revelstoke, BC
- Airports





We look forward
to hosting you at the
chalet this season

*Revelstoke Select Vacation
Properties Inc.*

250-200-0066
info@revelstokeselect.com

Ghost Peak Chalet

#20-2465 Monashee Court
Revelstoke, British Columbia V0E 2S3

GHOST PEAK CHALET

Revelstoke, British Columbia